



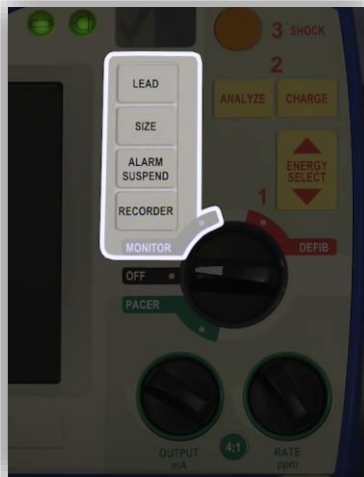
Zoll Defibrillator Monitor



Layout

Color Coded Zones:

- Gray Zone: Monitor
- Red Zone: Defibrillation
- Green Zone: Pacing



Lead Connector Cable

FIRST, Connect:

One-Step Electrodes → **Defibrillator**
Monitor



Connect defib pads
here



Defib connection cord
connected here when not in use

Lead Connector Cable

The Monitor is now connected to the leads and can now be attached to the patient!



Attaching the Monitor

How to Attach:

Open package

Detach one-step connector from the package

Grasp **Red** electrode labeled "1" and Peel off

Roll the Patient to their side

- I. Attach electrode to the left of the spine and under the scapula

Grasp **Blue** electrode labeled "2" and Peel off

- I. Place CPR Compression Sensor left side of chest:
 - i. Place Vertical Red Line **Midsternal**
 - ii. Horizontal Red Line between the nipples

**Lift Breast if necessary to place electrode underneath.



Using AED

3 Easy Steps:

1. Mode selector to **"DEFIB"**

1. Default for Adults: 120-150-200 joules
2. Default for Pediatrics:
 - **FIRST SHOCK: 2 J/Kg**
 - **SECOND SHOCK: 4 J/Kg**
 - **SUBSEQUENT SHOCKS: ≥ 4 J/Kg**
 - **MAX: 10 J/Kg**

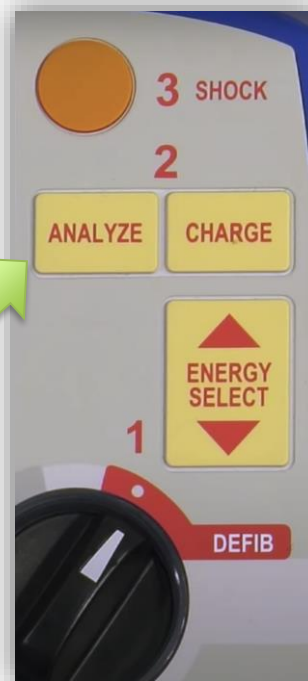
** Adjust by selecting "Energy Select" button

2. Stand Clear and Press **"ANALYZE"**

1. Read display message.
2. If SHOCK ADVISED is displayed, shout "Clear" and verify others are clear.

3. Press **"SHOCK"**

1. If "NO SHOCK ADVISED", check for pulse and if no pulse, resume CPR immediately.



Before shocking the patient:

- Confirm that no one is touching the patient
- Look to make sure all persons are clear of the patient, the bed, and any equipment connected to the patient
- Loudly warn all persons to stand clear

Using Manual Defibrillator

3 Easy Steps:

**Verify R-Series defibrillator is ready for use by noting ✓ on the front panel

1. Mode selector to **“DEFIB”**

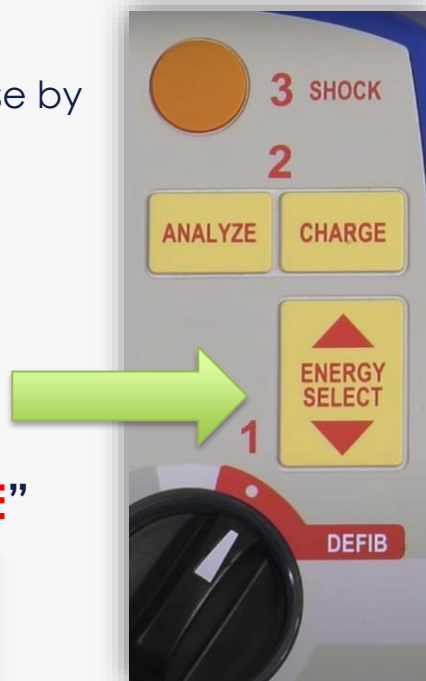
1. Default for Adults: 120-150-200 joules
2. Default for Pediatrics:
 - **FIRST SHOCK: 2 J/Kg**
 - **SECOND SHOCK: 4 J/Kg**
 - **SUBSEQUENT SHOCKS: ≥ 4 J/Kg**
 - **MAX: 10 J/Kg**

** Adjust by selecting “Energy Select” button

2. PALS Providers Press **“CHARGE”**

1. Stand Clear

3. Press **“SHOCK”**

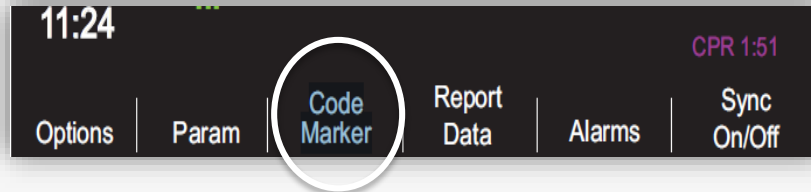


Before shocking the patient:

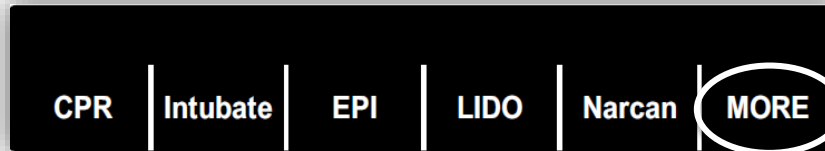
- Confirm that no one is touching the patient
- Look to make sure all persons are clear of the patient, the bed, and any equipment connected to the patient
- Loudly warn all persons to stand clear

Using Code Markers

Pressing the **CODE MARKER** softkey causes the unit to display a preconfigured list of clinical actions for DEFIB, MONITOR, and PACER modes.



Up to **six** CODE MARKERS can be displayed on the monitor at one time:



Press the **MORE** softkey to see the next set of Code Markers displayed above the softkeys

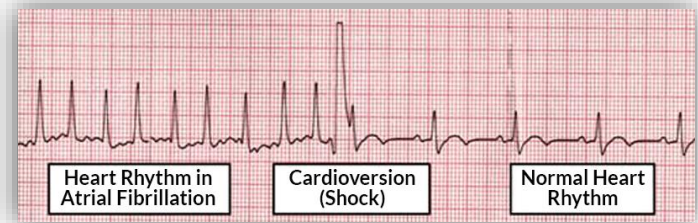
Pressing the softkey associated with a particular action causes that action, and 6 seconds of ECG, to be recorded along with a date and time stamp in the Summary Report memory.

Cardioversion

Synchronized cardioversion is shock delivery that is **timed with the QRS complex**.

Most Common Use:

- **Atrial Fibrillation/Atrial Flutter**
- **Unstable SVT**



The R Series supports two types of synchronized cardioversion:

• Synchronized Cardioversion :

The R Series monitors the patient's ECG and synchronizes shock delivery with this ECG source.

• Remote Synchronized Cardioversion:

An external device (such as a patient monitor) monitors the patient's ECG and provides a synchronization pulse to the R Series' Sync In/Marker Out connector.

Synchronized Cardioversion

3 Easy Steps:

1. Move dial to **“DEFIB”**

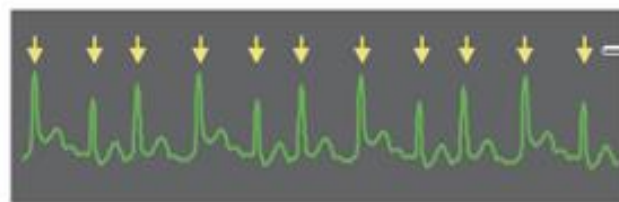
1. Select appropriate joules:
2. **Initial Dose: 0.5-1 J/Kg**
3. **Subsequent Dose: 2-4 J/Kg**
** Adjust by selecting “Energy Select” button

2. Press the **“SYNC”** soft key

1. Synchronizing circuit will detect the patient's R Waves
2. **Stand clear**

3. Press and Hold the **“SHOCK”** button

1. Unit will discharge with next detected R Wave, avoiding vulnerable T wave segment



Marker indicates each detected R wave during synchronization

Monitor Test

Manual Test:

1. DEFIB → 30 joules → CHARGE → Decrease to 20 joules
2. Reset to 30 joules → CHARGE → SHOCK → "TEST OK" appears on screen

Battery:

- Green light: Charged
- Yellow light: Charging
- Yellow + Green light: No Battery or faulty battery

DAILY
VISUAL
INSPECTION →

Defibrillator is clean and free of visible damage
 Cables are in good condition
 - not cut or frayed
 - connector pins are not bent
 Paper tray has enough paper
 Defibrillator is plugged into an AC power
 Green check mark appears in the Code Readiness indicator

Daily Automatic Test Verifies:

- Circuitry for ECG, pacing, and DEFIB is functional
- Battery charge level is sufficient
- All cables are functional
- Printer functional
- ✓ on panel if passed

**DEFIB CONNECTOR
 CONNECTED AT ALL
 TIMES WHEN NOT IN
 USE IN ORDER FOR
 SELF-TEST TO BE
 SUCCESSFUL**



IF MONITOR FAILS TWICE

**CONTACT AGILITY IMMEDIATELY
FOR REPLACEMENT : #41938**

THIS IS **OUR**
HOSPITAL